

Washington Metropolitan Area Transit Authority
Board Action/Information Summary

Action Information

MEAD Number:
200777

Resolution:
 Yes No

TITLE:

2014 MTPD First Quarter Security Report

PRESENTATION SUMMARY:

The Metro Transit Police Department (MTPD) First Quarter Security Report publicly communicates security-related information about the Metrorail and Metrobus Systems.

PURPOSE:

The MTPD Quarterly Security Report informs the Safety and Security Committee regarding crime in the Metro System and indicates performance measurement in accordance with Authority goals. Further, the public report increases communication to enhance security of our customers and the protection of Authority employees and property. The May Security Report will address and compare the first three months (January - March) of 2014, with the same period of time in 2013 and against the 2014 performance target.

DESCRIPTION:

A key component of customer satisfaction while riding on Metrorail or Metrobus is traveling in a safe and secure environment. As such, crime reduction performance measurement is included as part of Metro's Business Plan. A 2014 target has been established for less than 2,000 Part I Crimes for the year.

Key Highlights:

- The probability of being a victim of a Part I Crime in the Metrorail system for the first quarter is 3.25 crimes per million (CPM) riders, down from 5.88 CPM in first quarter 2013.
- The overall crime rate (average CPM for all modes) is down by 31% driven primarily by a significant reduction of three major crimes: robberies, snatches of electronic devices, and bicycle thefts.
- Bus crime rate is reduced by about 21%.
- Parking lot crime remains low at 1.17 CPM, however, was increased in January as a result of a series of vehicle-related crime at Wheaton and Fort Totten Rail Stations.

Background and History:

Part I Crime is a standardized statistic utilized by the Federal Bureau of Investigation (FBI) to measure serious jurisdictional crime in the United States. Part I Crimes are

identified as ten key offenses: aggravated assault, robbery, larceny, motor vehicle theft, rape, burglary, homicide, arson, human trafficking/commercial sex acts, and human trafficking/involuntary servitude.

Since 2010, the MTPD has used a performance-based process to improve security in Metrorail and Metrobus systems. Guided by specific objectives, the MTPD analyze statistics, establish patrol deployment strategies and tactics, then assess results and follow up.

Discussion:

Crime reduction is a performance objective identified in the Metro goal of safe and secure transit, with an established target of less than 2,000 Part I Crimes in Calendar Year 2014. In the first quarter of 2014, we experienced a significant reduction of Part I Crimes in the Metrorail system. This year, we recorded 271 Part I Crimes in the first quarter which was the most favorable outcome since the first quarter crime report of 2007 when we experienced 281 Part I Crimes.

Last year, the Metro Transit Police Department performed extensive analysis of departmental organization, deployment of resources, strategies, crime patterns, and geographical patrol areas. Since then, incremental efforts have been introduced to improve our crime reduction performance.

Three crimes in 2013 were our greatest challenges: snatches of small electronic devices (particularly iPhones), bicycle thefts, and robberies. Snatches of electronic devices gained national attention last year, and in February 2014 U.S. Senator Barbara Mikulski announced co-sponsorship of two legislative proposals to help deter cell phone thefts, one involving the inclusion of kill switch technology on devices, and the other making it a federal crime to alter the International Mobile Equipment Identity (IMEI) of cell phones. In the first quarter of 2014, snatches of electronic devices were reduced by 42% (137 to 79 crimes).

Bicycle thefts were reduced by more than half, from 45 crimes in the first quarter of 2013 to 20 stolen bicycles this year in January through March. Only two stations had multiple events, College Park (3) and Tenleytown (2) rail stations. It is unfortunate that College Park is on the list of hotspots, since Metro installed a state-of-the-art secure bicycle facility at that station. Many news broadcasts have reported a proliferation of bicycle thefts in the region, particularly Northern Virginia and the District of Columbia. Regardless, the MTPD will continue to employ strategies such as increased uniformed patrols, use of casual clothes police surveillance, cameras and public engagement in prevention. Over the last year, the MTPD has promoted the use of online WMATA Bicycle Registration and the give-away of recommended bicycle locks to Metro customers. About one-third of all Metro bike-to-station riders are registered on the online bike registry.

The third crime in which a significant reduction was recorded is robbery. The crime of robbery is always a concern because of the close interaction between the suspect and victim, and therefore a greater opportunity for the victim to be injured during the crime. Robberies are divided into three main categories: armed, force and violence, and fear. All three categories recorded significant decreases, with an overall robbery reduction of

55% (121 to 55 crimes). Over half of all robberies occur on buses or at bus stops, possibly because these locations offer the best possibility of a quick escape route and less detection on the streets by video technology. It also must be stated that on buses, robberies were reduced by half (16 to 8 crimes).

Part I Crime on buses was reduced by about 20% (45 to 36). The greatest reductions were for armed robbery (5 to 0) and aggravated assaults (8 to 4). Snatches of electronic devices on buses increased by 3 crimes (up 20%). Assaults (usually not Part I Crime) on bus operators remained the same with 15 reported incidents. The vast majority (about 90%) of bus operator assaults occur after 4:00 p.m. The MTPD is currently analyzing deployment of dedicated bus patrol officers and is in final consideration of deployment of more of those officers to the evening hours.

Part I Crimes in Metro parking facilities doubled in the first quarter of this year. The MTPD recorded 53 parking lot crimes in the first quarter with over half of those occurring in January. The greatest increase was seen in Thefts and Attempt Thefts of Autos, which more than doubled in 2014 (9 to 22 crimes). A large majority of the parking lot crimes occurred as a result of consecutive events at Wheaton and Fort Totten Rail stations. February and March Part I Crime rates in the parking lots returned to less than 1 crime per million riders.

Finally, the MTPD recognizes that unusually severe weather conditions probably had an effect on the number of Part I Crimes recorded for the first quarter of 2014. Fewer customers mean less opportunities for crime to occur. With that fact duly noted, the crime rate on rail began to show a decrease shortly after the MTPD reorganization in September 2013. Each month the crime rate dropped in rail: September/8.53 CPM, October/8.13 CPM, November/5.87 CPM, December/4.30 CPM, January/3.22 CPM, February/3.20 CPM, and then up slightly in March/3.34 CPM. The MTPD has been applying a multitude of strategies and tactics to reduce crime in the Metro system. And we are constantly adjusting to meet the trends as our crime is analyzed to achieve the best possible outcomes for our customers and fellow employees.

FUNDING IMPACT:

Define current or potential funding impact, including source of reimbursable funds.	
Project Manager:	Chief Ronald A. Pavlik, Jr.
Project Department/Office:	MTPD

This document contains information relating to Part I Crime in the Metro System for the First Quarter of 2014.

TIMELINE:

Previous Actions	January/2014 – <ul style="list-style-type: none">• High Intensity Targeted Enforcement• Partner with local police jurisdictions for increased visibility• Deploy officers in casual clothes crime suppression teams• Engage customers in crime prevention by encouraging online bike registration and providing recommended bike locks• Utilize multiple strategies to prevent thefts of electronic devices
Anticipated actions after presentation	May/2014 – <ul style="list-style-type: none">• Analyze deployment of dedicated bus patrol officers• Continue partnering with schools through Respect Your Ride campaign• Coordinate with local jurisdictions to increase security• Initiate security plans for Silver Line start up

RECOMMENDATION:

N/A



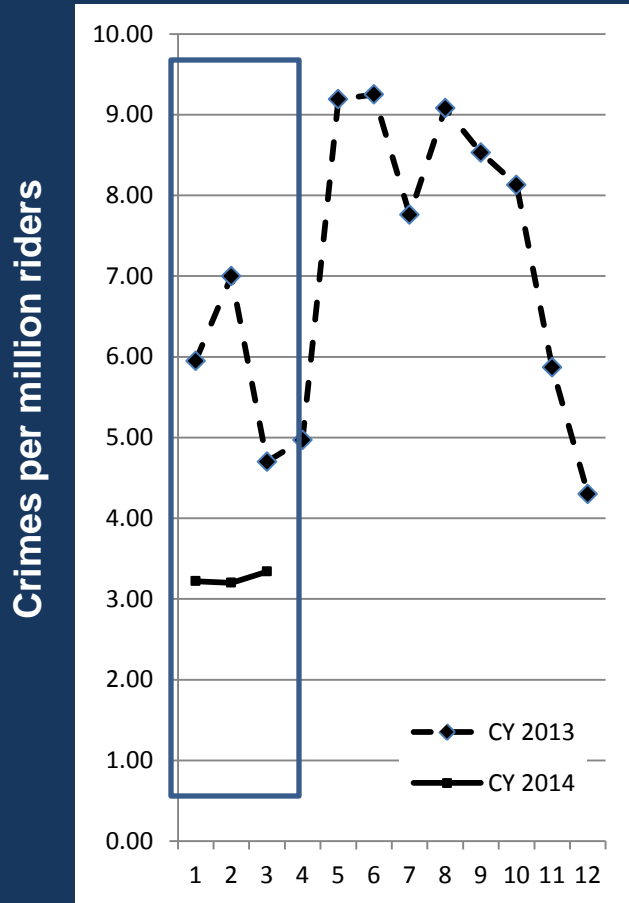
Security Report

Safety and Security Committee

May 22, 2014



Rail Crime Rate Reduces In First Quarter



Why?

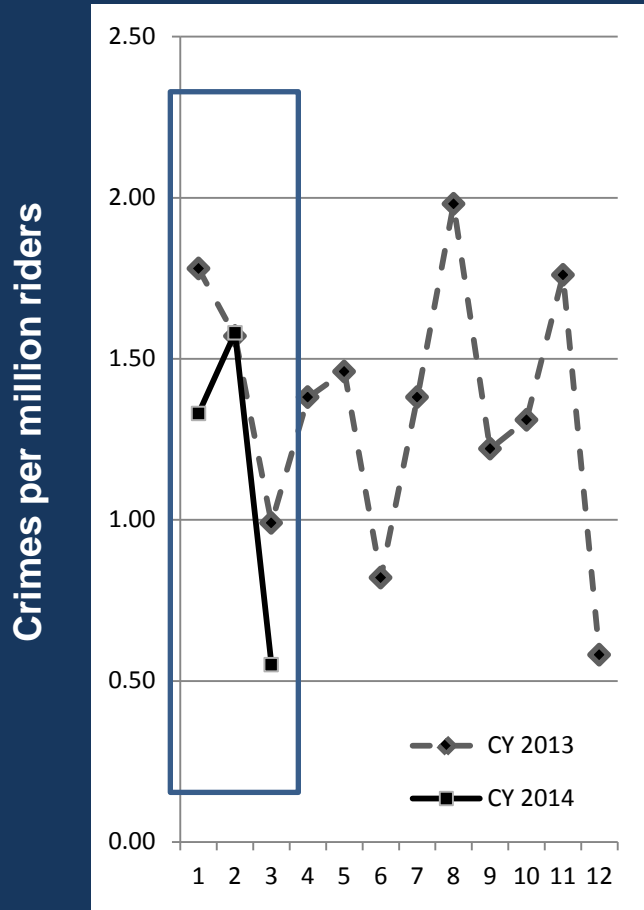
- Thefts of electronic devices down 42%
- Bicycle thefts down 56%
- Robberies overall down 55%

Actions in Q1 2014:

- Multi-faceted customer outreach
- Online bicycle registration and lock giveaway
- Uniformed crime suppression teams
- Cross-functional intelligence sharing



Bus Crime Rate Decreases In First Quarter



Why?

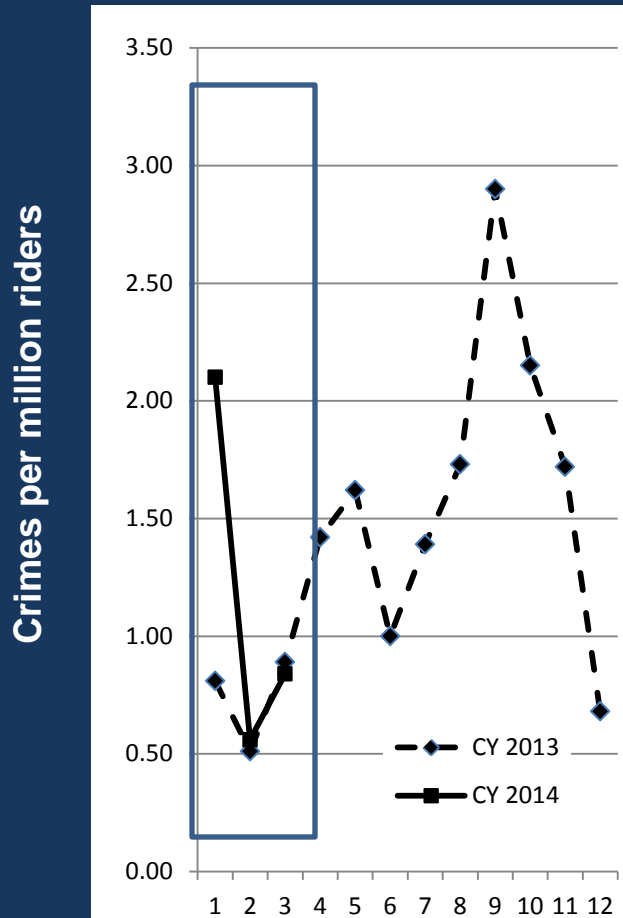
- Robberies, aggravated assaults down
- Slight uptick in snatches of electronics (3 more than Q1/2013)

Actions in Q1 2014:

- Increased officer visibility on hotspot bus routes
- Patrol cars escort buses in problem areas
- Increased enforcement of fare evasion



Parking Crime Rate Increases In First Quarter



Why?

- Auto thefts/attempts more than double
- Thefts from autos up 87%
- Thefts of parts/accessories down 40%

Actions in Q1 2014:

- Crime prevention via customer outreach
- Coordination with local jurisdictions
- Deployment of deterrent vehicles
- Casual clothes teams target hotspots

Part I Crime Against Property

Crimes Against Property	Type	Jan – March 2013	Jan – March 2014
Larceny/Theft	Snatch	137	79
	Pickpocket	7	9
	From Auto	15	28
	Auto Parts/Access.	5	3
	Bicycle	45	20
	From Building	1	0
	Other	32	32
Auto Theft/Attempts		9	22
Burglary		0	0
Arson		2	1



**Bike Thefts
Down 56%**

Part I Crime Against Persons

Crimes Against Person	Type	Jan – March 2013	Jan – March 2014
Robbery *	Force & Violence	77	31
	Armed	35	22
	Fear	9	2
Aggravated Assault		27	22
Rape		0	0
Homicide		0	0



Down 48%

* The offense of robbery is classified as a crime against property by the Federal Bureau of Investigation. Because potential danger to victims, robbery has been classified in this presentation as a crime against persons.



Sexual Harassment Prevention

MTPD
Online
Harassment
Complaints

First Quarter	2013	2014
Harassment	10	9
Criminal	10	10
Criminal (Non-sexual)	5	2

Washington Metropolitan Area Transit Authority

search

Home Rail Bus Accessibility Getting Around Fares Rider Tools About Metro

About Metro

- Board of Directors
- General Manager
- Strategic Plan
- Scorecard
- Inspector General
- Careers

Report Harassment

IT'S NOT OK
REPORT SEXUAL HARASSMENT ON METRO

Page 15 of 20