

BUILDING MASSING AT SE LOT CORNER

Project
1101 Rhode Island Avenue, NW
Washington, DC

Client
CAS Riegler Companies

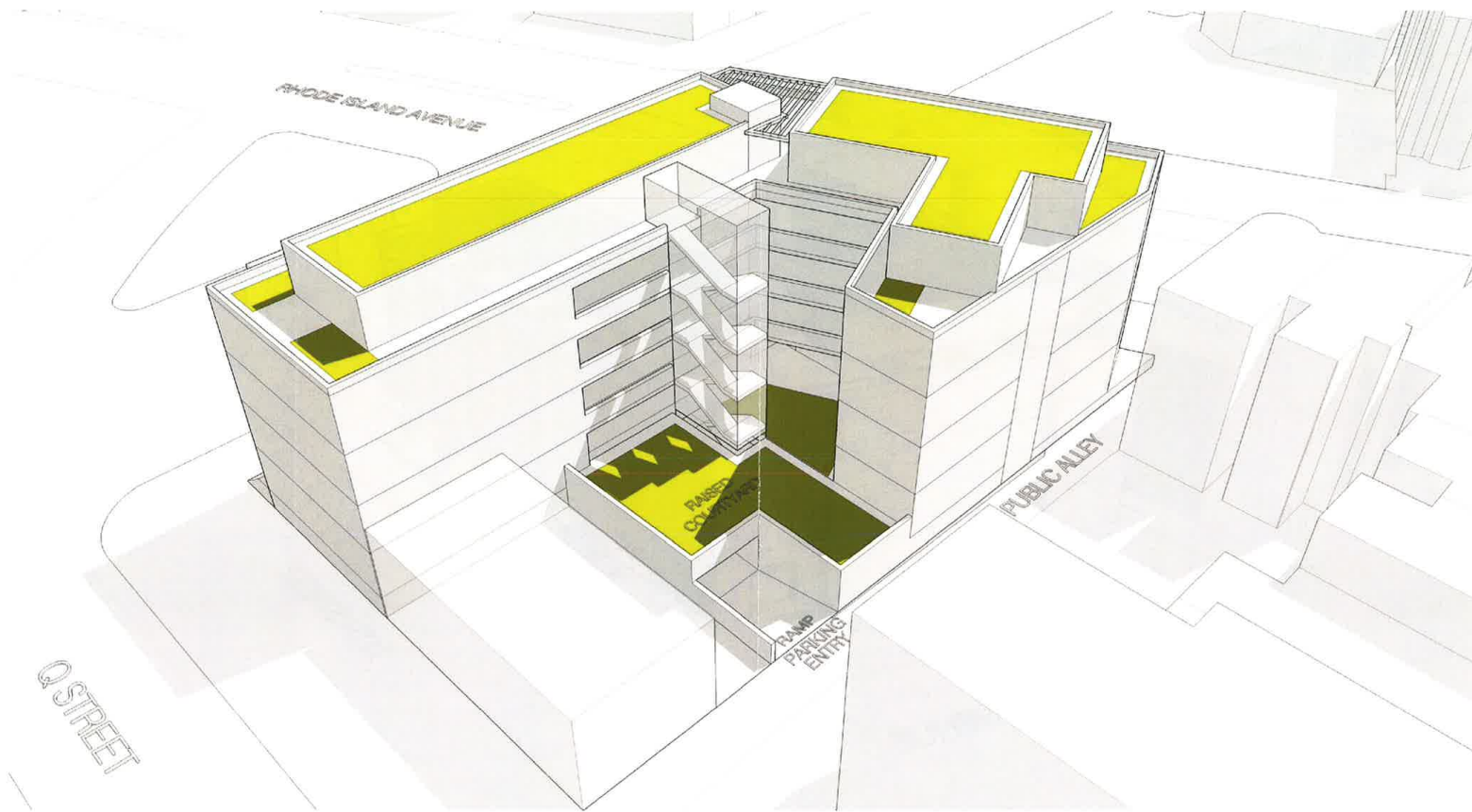
Project Phase
BZA - Preliminary Submission

Scale
1/16" = 1'-0"

Date
September 13, 2013

A-17





BUILDING MASSING AT NW LOT CORNER

Project
1101 Rhode Island Avenue, NW
Washington, DC

Client
CAS Riegler Companies

Project Phase
BZA - Preliminary Submission

Scale
1/16" = 1'-0"

Date
September 13, 2013

A-18

